



凭借高质量和高速数字喷墨打印在印刷行业中处于领先地位
科杰以中国发展最快的宽幅技术迎接无限设计可能性的世界。
我们科杰在创新、强大的外展和服务基础设施以及以客户为中心的完整产品方面发展了我们的核心竞争力。我们制造配备最新技术的超高速机器，旨在满足您现在和未来的需求。科杰产品由一支强大的专家和工程师团队提供支持，团队遍布研发、客户支持、应用、机器设计和销售相关职能。
科杰提供的解决方案涉及广泛探索创建您选择的多种设计以及广泛的传统和现代设计。
通过与战略合作伙伴的合作，科杰将继续向全球市场提供无与伦比的功能和创新产品。
科杰是凌峰的旗舰品牌。凌峰是一家在中国注册的公司，其运营、制造设施和销售办事处位于中国上海。自2013年以来，凌峰一直是领先品牌数字打印机工业设备制造的顶级市场领导者。

LEADERSHIP IN PRINTING INDUSTRY WITH HIGH QUALITY & HIGH-SPEED DIGITAL INKJET PRINTING

Kejie welcomes the world of infinite design possibilities with the fastest-growing wide-format technology in China.

We at Kejie developed our core competencies in innovation, Strong Outreach & Service infrastructure and complete customer focus offerings. We manufacture super-fast machines equipped with the latest technology designed to meet your present and future requirements. Kejie products are backed by a strong team of experts and engineers spread across R&D, Customer Support, Application, Machine Design and Sales related functions.

Kejie provides solutions that involve wide exploration in creating multiple designs selected by you and an extensive range of traditional and modern designs.

In collaboration with strategic partners, Kejie will continue to deliver unmatched functionality and innovative products to the global marketplace.

Kejie is a flagship brand of Lingfeng. Lingfeng is a registered company in China with its operations, manufacturing facilities and sales offices in Shanghai, China. Lingfeng has been a top market leader in industrial equipment manufacturing of digital printers for the leading brand since 2013.

ABOUT KEJIE

Innovation to meet today's challenges and tomorrow's requirements

SPECIFICATIONS

S2-512				
Technical Key Specification				
Print Heads		Japanese Konica Minolta		
		4 Head	8 Head	
Media Specification				
Media	Width	3300 mm (129 in)		
	Thickness	Maximum 3.0 mm (120 mil) with Liner (flexible)		
	Roll Outer Diameter	Maximum 300 mm (12 in), 50.8 (2 in)		
	Roll Weight	Maximum 90 kg		
	Core Diameter	76.2 mm (3 in)		
Media Types		PVC Banner, Polyester Fabric, Vinyl, Flex, Backlite Film, Fabric (Solvent Base)		
Media Heating System		Pre-heater and post-heater, setting range for the preset temperature: 30 to 60°C. Dryer setting range for the preset temperature : 30 to 60°C		
Print Specifications				
Printing Width		Maximum 3200mm (126 inch.)		
Connectivity		High Speed USB		
Printing Resolution (dots per inch)		Maximum up to 1440 dpi		
Ink Specifications				
Ink Types		Solvent Ink/Mild solvent Ink		
Ink Colors		CYAN, MAGENTA, YELLOW, BLACK (CMYK) (4 Color)		
Power Consumption & Working Environment				
Power Requirements		AC 220 V ±10%, 20 Amps, 50/60 Hz		
Power ON		Temperature: 18 to 28°C Humidity: 20 to 80%RH (non-condensing)		
Power OFF		Temperature: 5 to 40°C Humidity: 20 to 80%RH (non-condensing)		
Machine Meaurments				
Printer Dimensions		4505mm x 1017mm x 1350mm (LxWxH)		
Weight (approx. with stand)		490 Kgs		
Performance				
Print Mode	Print Resolution	Passes	Speed - 4 Head	Speed - 8 Head
Mode 1	180 x 360	2P	407 SQFT/HR	678 SQFT/HR
Mode 2	180 x 540	3P	270 SQFT/HR	533 SQFT/HR
Mode 3	180 x 720	4P	234 SQFT/HR	387 SQFT/HR

KEJIE DIGITAL

CHINA:
Shanghai Lingfeng Digital Equipment CO. LTD.,
B5, Industrial Park, 206 Peikun Road, Minhang Dist.,
Shanghai, China -201111 | (+86) 21-34902852

INDIA REPRESENTATIVE
+91-9667541927 | info@kejiedigital.com
www.kejiedigital.com



MAKE THE CHANGE WITH EXCELLENT PERFORMER



S2 3.2 MTR ROLL-TO-ROLL SOLVENT PRINTER

MEET THE TOP-OF-THE-RANGE SIGNAGE MACHINE

The newly launched KEJIE's signature flagship product S2 is fused with high-quality, and high production speeds up to 678 sq/ft per hour. This flex printing machine has a well-renowned and robust body combined with improvised and advanced features and offers very high value for money. Its intelligent design makes it the most stable and reliable machine in its segment. S2 is the finest solution for entry-level customers looking to print outdoor signage and advertising applications by providing leading performance at entry-level costs. The advanced print technology of S2 offers greater versatility and yields efficient and economical output.

PATENTED TECHNOLOGY

- PARTICLE FILTRATION TECHNOLOGY™**
- STATIC DEGENERATE TECHNOLOGY™**
- SUPERRAIL TECHNOLOGY™**
- TREMOR PROOF™**
- TUMBLE INK TANK™**

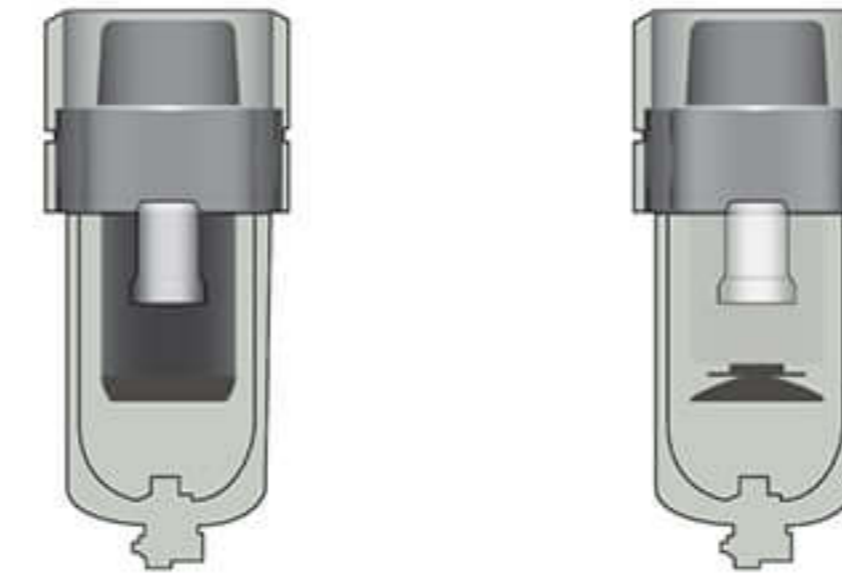
ZERO MAINTENANCE FACILITY & LONG LIFE OF 10 YEARS OF KEJIE PRINTERS IS POSSIBLE DUE TO INCORPORATION OF FOLLOWING MAIN IMPROVEMENTS IN TECHNOLOGY



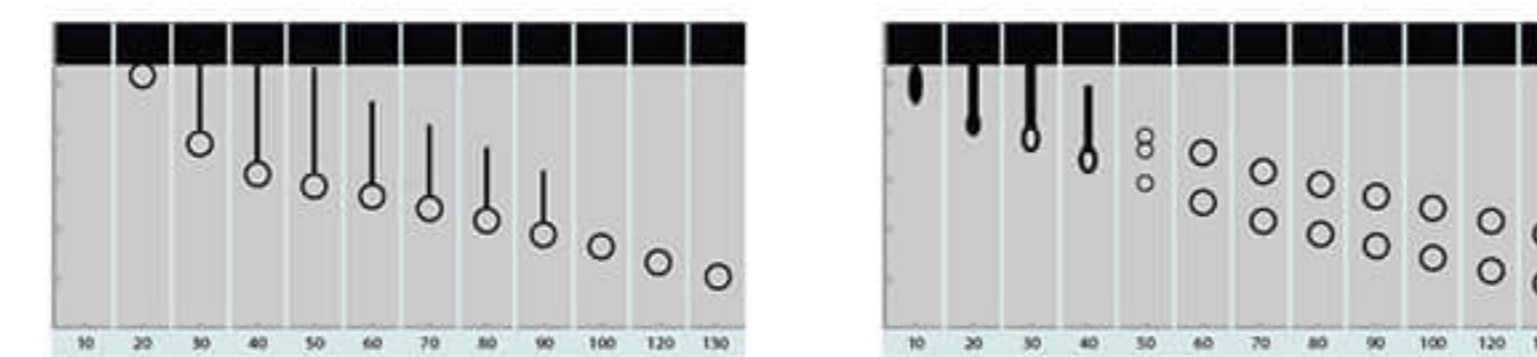
S2
3.2 MTR
ROLL-TO-ROLL
SOLVENT PRINTER

KEY POINTS

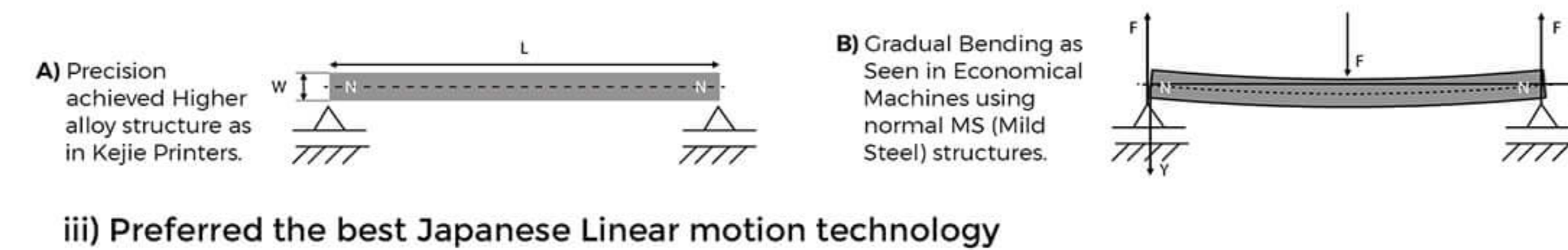
- Kejie provides backup support **upto long life of 10 years** to ensure risk-free long-term returns
- **Particle Filtration Technology** use Japanese regulators in the ink supply system for the best effective prevention of entry of dust to reduce head chances of blockage



- **Static Degenerate Technology** in Solvent-Based printers to provide a long-lasting leading quality upon the technical grounds

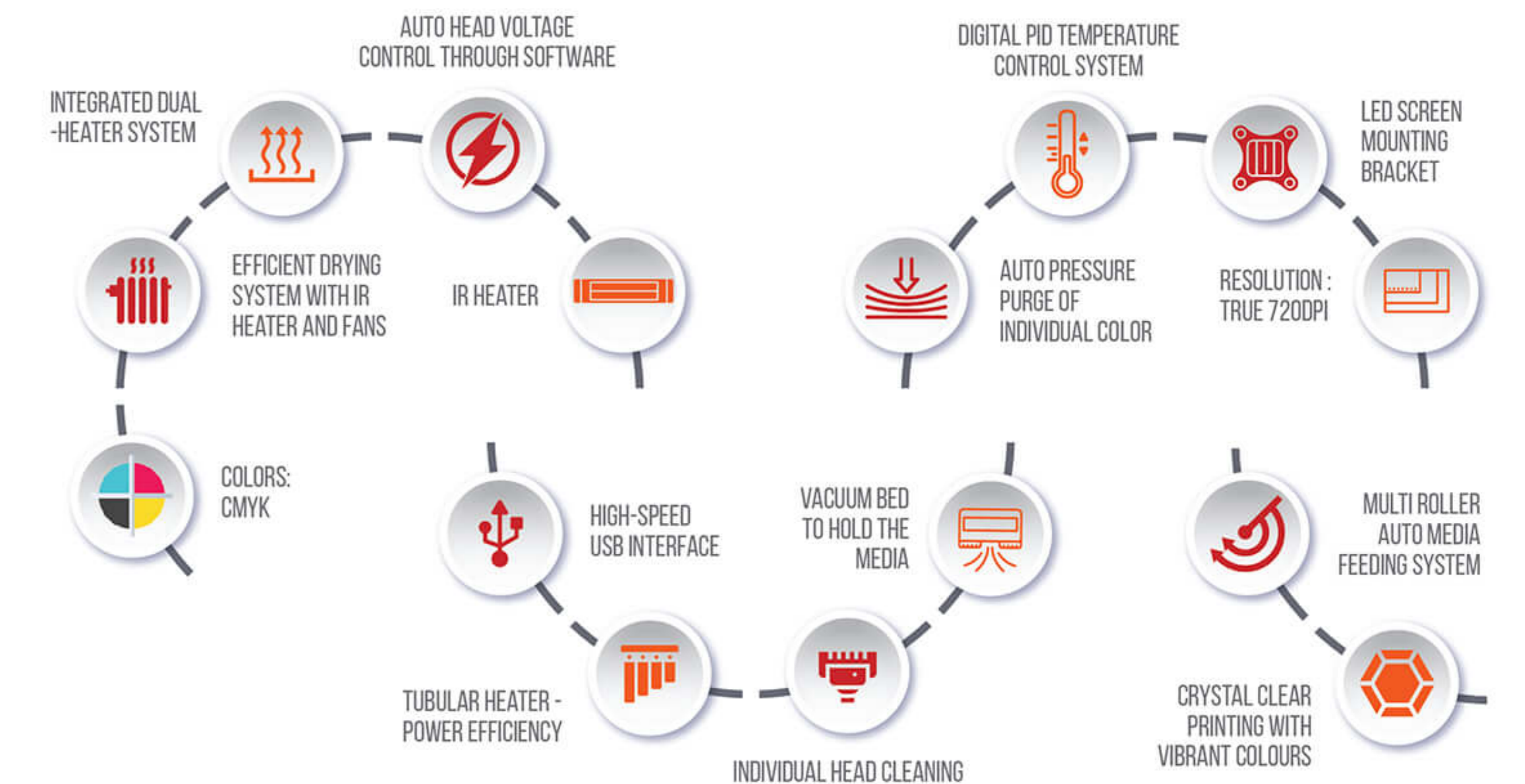


- Our ultra-modern software control delivers magnificent print quality and ensures **upto 30% Ink Saving**
- Our Ink Reservoirs have **Tumble Ink Tank Technology** to ensure ink consistency for stable print quality and save heads for a long time
- We adopted **Super Rail Technology** in our design to ensure **long-term mechanical stability**:
 - i) German automation of a leading solution provider to Insulate Vibration
 - ii) The best referred higher alloys to frame up precision parts



- iii) Preferred the best Japanese Linear motion technology

FEATURES



COMPONENTS DETAILS

Control System -	BYHX, China	Heater controller -	Delta
Machine Chassis -	High Precision Alloy	Linear Guide -	THK Japan
Machine Outer covers -	Steel	LVDS cable -	Igus, Germany
Servomotor -	Delta, USA/Leadshine	Cableschain -	Igus, Germany